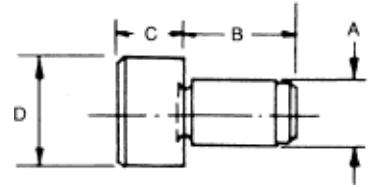


**Rest Buttons**

| PART #  | +0.000  | B     | +0.001 | D      |
|---------|---------|-------|--------|--------|
|         | -0.0005 |       | -0.000 |        |
| RB-1881 | .1885   | 3/8   | .250   | 3/8    |
| RB-1882 | .1885   | 3/8   | .375   | 3/8    |
| RB-1883 | .1885   | 3/8   | .500   | 3/8    |
| RB-141  | .2510   | 1/2   | .250   | 1/2    |
| RB-142  | .2510   | 1/2   | .375   | 1/2    |
| RB-143  | .2510   | 1/2   | .500   | 1/2    |
| RB-381  | .3760   | 5/8   | .250   | 5/8    |
| RB-382  | .3760   | 5/8   | .375   | 5/8    |
| RB-1    | .3760   | 11/16 | .4375  | 11/16  |
| RB-383  | .3760   | 5/8   | .500   | 5/8    |
| RB-384  | .3760   | 5/8   | .625   | 5/8    |
| RB-385  | .3760   | 5/8   | .750   | 5/8    |
| RB-2    | .3805   | 11/16 | .375   | 11/16  |
| RB-5001 | .5010   | 5/8   | .375   | 7/8    |
| RB-3    | .5010   | 13/16 | .4375  | 7/8    |
| RB-5003 | .5010   | 5/8   | .500   | 7/8    |
| RB-5004 | .5010   | 5/8   | .625   | 7/8    |
| RB-5005 | .5010   | 5/8   | .750   | 7/8    |
| RB-4    | .5055   | 13/16 | .4375  | 7/8    |
| RB-6251 | .6260   | 3/4   | .375   | 1      |
| RB-5    | .6260   | 15/16 | .4375  | 1-1/16 |
| RB-6253 | .6260   | 3/4   | .500   | 1      |
| RB-6254 | .6260   | 3/4   | .625   | 1      |
| RB-6255 | .6260   | 3/4   | .750   | 1      |
| RB-6    | .6305   | 15/16 | .4375  | 1-1/16 |
| RB-7501 | .7515   | 7/8   | .375   | 1-1/4  |
| RB-7502 | .7515   | 7/8   | .4375  | 1-1/4  |
| RB-7503 | .7515   | 7/8   | .500   | 1-1/4  |
| RB-7    | .7515   | 7/8   | .625   | 1-1/4  |
| RB-8    | 1.0010  | 1-1/4 | .750   | 1-5/8  |

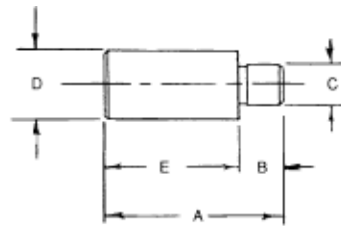
- ▶ Press fit design
- ▶ Case hardened carbon steel
- ▶ Black oxide finish
- ▶ Precision ground



- ▶ Machined from 416 stainless steel
- ▶ Press fit design
- ▶ Rest buttons are magnetic

**Stainless Steel Rest Buttons**

| PART # | A      | B    | C    | D   | E   |
|--------|--------|------|------|-----|-----|
| 2375   | 1/2    | 1/4  | 3/16 | 3/8 | 1/4 |
| 2376   | 5/8    | 1/4  | 3/16 | 3/8 | 3/8 |
| 2377   | 3/4    | 1/4  | 3/16 | 3/8 | 1/2 |
| 2503   | 9/16   | 5/16 | 1/4  | 1/2 | 1/4 |
| 2504   | 11/16  | 5/16 | 1/4  | 1/2 | 3/8 |
| 2505   | 13/16  | 5/16 | 5/16 | 1/2 | 1/2 |
| 2506   | 1-1/16 | 5/16 | 5/16 | 1/2 | 3/4 |
| 2507   | 1-5/16 | 5/16 | 5/16 | 1/2 | 1   |



- ▶ Case hardened, black oxide finish
- ▶ RP-10 has 2 holes
- ▶ RP-20 has 4 holes 1" apart
- ▶ "D" dimension...+.005-.005
- ▶ Holes designed for 3/8" socket head shoulder screw

**Rest Pads**

| PART # | A     | B  | C  | D     |
|--------|-------|----|----|-------|
| RP-10  | 2-3/8 | 1" | 1" | 1-5/8 |
| RP-20  | 3-3/8 | 2" | 2" | 2-5/8 |

